



# Product Guide



[www.hillendeng.com](http://www.hillendeng.com)

Quality - Reliability - Durability - After Sales Care



Committed to Quality - Reliability -  
Durability & After Sales Care

## After Sales Care

**Please Contact:**

**Tel: +44 (0)1383 823625**

**email: [serviceinfo@hillendeng.com](mailto:serviceinfo@hillendeng.com)**

## Commitment to a Shared Success

Farid Hillend understand that excellent customer service and creating value is a key aspect in earning and retaining customer loyalty. With this in mind we are committed to a philosophy of continuous improvement, which is driven by listening and responding to customers' needs. This is our commitment to building our future and setting the standard for aftercare professionalism, expertise and customer satisfaction in the waste handling industry today.

Our prime goal is to provide "best in class" warranty and after sales care for all our clients.

We offer a range of services to support your vehicle throughout its entire life cycle. What's more we extend our service not just to our own products but also to other manufacturers products too. No matter what type of refuse or recycling vehicle you are operating we will be pleased to offer our services.

Services include:

- Service and Inspection (inclusive of Service Level Agreements)
- Repair and Maintenance (inclusive of Service Level Agreements)
- Workshop repair facilities
- Refurbishments
- LOLER testing
- Extended Warranty
- Training
- Comprehensive spares supply

At Farid Hillend we are keen to ensure that we provide service standards at the highest level. In order to continue to provide the highest standard of support expected by our customers we would be delighted to receive your feedback at: [serviceinfo@hillendeng.com](mailto:serviceinfo@hillendeng.com)



A comprehensive product family covering:  
Mini Compactors, Side, Rear and Front End  
Loaders through to the Super Titan Semi-Trailers

# CARE!



### Farid Hillend Engineering Limited

Taxi Way, Hillend Industrial Estate, Dunfermline,  
Fife KY11 9ES United Kingdom

**Tel: +44 (0) 1383 823625**

**Fax: +44 (0) 1383 824062**

[serviceinfo@hillendeng.com](mailto:serviceinfo@hillendeng.com)

[www.hillendeng.com](http://www.hillendeng.com)

Quality - Reliability - Durability - After Sales Care



## Product Guide - Contents

	Page
■ After Sales Care .....	2
■ Waste Vehicle Management Solutions .....	4
<b>MINICOMPACTORS:</b> .....	5 - 6
spanning 4m <sup>3</sup> to 15m <sup>3</sup> capacity	
■ Micro S - (4m <sup>3</sup> ) .....	7
■ Micro L - (5m <sup>3</sup> ) .....	8
■ Micro XHD - (7m <sup>3</sup> ) .....	9
■ MiniMatic - (8m <sup>3</sup> ) .....	10
■ MK2 - (10m <sup>3</sup> ) .....	11
■ Food & Clinical Waste .....	12 - 14
<b>OPTIMISED REAR LOADERS:</b> .....	15 - 16
spanning 6m <sup>3</sup> to 15m <sup>3</sup> capacity	
■ PowerPack PNDR - (6-7m <sup>3</sup> ) .....	17
■ PowerPack PN SF (Electric) - (10m <sup>3</sup> ) .....	18
■ PowerPack PN - (10-15m <sup>3</sup> ) .....	19
<b>REAR LOADERS:</b> .....	21 - 21
spanning 7m <sup>3</sup> to 31m <sup>3</sup> capacity	
■ PowerPack T1 Plus - (7-27m <sup>3</sup> ) .....	23 - 23
■ PowerLink - (16-26m <sup>3</sup> ) .....	24
■ TwinTrak - (14-26m <sup>3</sup> ) .....	25
■ BigBite Junior - (23-25m <sup>3</sup> ) .....	26
■ BigBite Industrial - (27-31m <sup>3</sup> ) .....	27
<b>FRONT LOADERS:</b> .....	28
spanning 30m <sup>3</sup> to 36m <sup>3</sup> capacity	
■ European Half Pack - (30-36m <sup>3</sup> ) .....	29
<b>SIDE LOADERS:</b> .....	30
spanning 15m <sup>3</sup> to 30m <sup>3</sup> capacity	
■ FMO Plus - (15-30m <sup>3</sup> ) .....	31
<b>DULE SYSTEMS - EQUIPMENTS:</b> .....	32
spanning 26m <sup>3</sup> to 28m <sup>3</sup> capacity	
■ Dule System - (26-28m <sup>3</sup> ) .....	33
<b>CONTAINER WASHERS:</b> .....	34
■ Container Washer (side & rear wash) .....	35
<b>SPECIALIST:</b> .....	36
■ Super Titan Semi Trailer - (40m <sup>3</sup> ) .....	37
■ Unipod .....	38
■ Bin Lifters ■ .....	39

# Waste Vehicle Management Solutions

## Operational Peace of Mind

Waste Vehicle Management Solutions from Farid Hillend Engineering Company (FHE) delivers comprehensive customer care, one stop funding and outsourcing solutions for the waste management industry.

### Key Benefits:

Waste Vehicle Management Solutions provides access to funding, maintenance, fleet management and cost control services, all in one convenient package with fixed monthly payments.



Package includes:

- Vehicle specification and build management service
- Consultancy services including workshops and operating centre surveys
- Finance available on all FHE vehicles, (chassis, body & lifts)
- Dedicated 24/7 support centre
- Nationwide FHE maintenance and repair service network
- Genuine FHE spare parts
- Industry expertise at the end of the phone
- Management services:
  - ❖ Fleet management
  - ❖ Downtime management
  - ❖ Compliance management
  - ❖ Operators defect management
  - ❖ Damage recharge management
- Comprehensive vehicle and fleet performance reporting
- Cost reduction and efficiency programmes



# MINICOMPACTORS:

spanning 4m<sup>3</sup> to 15m<sup>3</sup> capacity



■ Micro S



■ Micro L



■ Micro XHD



■ MiniMatic



■ MK2

# MiniCompactors

## Key Benefits:

	Micro S & L	Micro XHD	MiniMatic	MM2
● Fully sealed one piece high tensile steel body construction for high strength with guaranteed no leakages - ideal for food, garden and offensive waste.	✓	✓	✓	✓
● Small, compact and very manoeuvrable, an ideal solution where restricted access is a problem and excellent manoeuvrability is required	✓	✓	✓	✓
● Farid comb bin lift fitted as standard - Capable of handling all EN standard bins from 120 litres to 1100 litres capacity and food waste caddies or 'slave type' bins	✓	✓	✓	✓
● Hand loading can be achieved by using optional side access doors	✓	✓		
● Hand loading can be achieved via drop-down rave			✓	✓
● Enclosed body roof for waste containment and better packing strength distribution with reduced stress points	✓	✓	✓	✓
● Top mounted, fully enclosed compaction blade with compaction. Compaction blade cylinders mounted outside the hopper area, keeping them clear of the refuse loading area	3:1	3.5:1	3:1	5:1
● Unloading of waste by tipping, ensuring complete discharge of waste materials and residual liquids collected. Suitable for tipping into skips, rolono containers and satellite discharge operation	✓	✓		
● Unloading of waste by ejection plate, ensuring complete discharge of waste materials and residual liquids collected. Suitable for satellite discharge operation			✓	✓

## Options

● 130 litre Slave Bin with Travel Bar	✓	✓	✓	✓
● Spray Gun	✓	✓	✓	✓
● Side Door with Safety Proximity Switch	✓	✓		✓
● Duo - pod	✓	✓	✓	✓
● Clinical Storage Catwalk			✓	✓
● Clinical Storage Pod			✓	✓
● Under Body Lift				
● Additional Lighting	✓	✓	✓	✓
● Handwash	✓	✓	✓	✓
● Additional Safety Equipment - incl cycle safety systems	✓	✓	✓	✓
● Adjustable Compaction Pressure Switch				✓



### Key Benefits:

- Fully sealed one piece high tensile steel body construction for high strength with guaranteed no leakages
- Small, compact and very manoeuvrable, an ideal solution where restricted access is a problem and excellent manoeuvrability is required
- Farid comb bin lift fitted as standard - Capable of handling all EN standard bins from 120 litres to 1100 litres capacity and food waste caddies or 'slave type' bins
- Hand loading can be achieved by using optional side access doors
- Enclosed body roof for waste containment and better packing strength distribution with reduced stress points
- Top mounted, fully enclosed compaction blade with 3:1 compaction. Compaction blade cylinders mounted outside the hopper area, keeping them clear of the refuse loading area
- Unloading of waste by tipping, ensuring complete discharge of waste materials and residual liquids collected. Suitable for tipping into skips, rolono containers and satellite discharge operation







### Key Benefits:

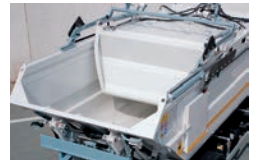
- Fully sealed one piece high tensile steel body construction for high strength with guaranteed no leakages
- Small, compact and very manoeuvrable, an ideal solution where restricted access is a problem and excellent manoeuvrability is required
- Farid comb bin lift fitted as standard - Capable of handling all EN standard bins from 120 litres to 1100 litres capacity and food waste caddies or 'slave type' bins
- Hand loading can be achieved by using optional side access doors
- Enclosed body roof for waste containment and better packing strength distribution with reduced stress points
- Top mounted, fully enclosed compaction blade with 3:1 compaction. Compaction blade cylinders mounted outside the hopper area, keeping them clear of the refuse loading area
- Unloading of waste by tipping, ensuring complete discharge of waste materials and residual liquids collected. Suitable for tipping into skips, rolonof containers and satellite discharge operation





## Key Benefits:

- Fully sealed one piece high tensile steel body construction for high strength with guaranteed no leakages
- Small, compact and very manoeuvrable, an ideal solution where restricted access is a problem and excellent manoeuvrability is required
- Farid comb bin lift fitted as standard - Capable of handling all EN standard bins from 120 litres to 1100 litres capacity and food waste caddies or 'slave type' bins
- Hand loading can be achieved by using optional side access doors
- Enclosed body roof for waste containment and better packing strength distribution with reduced stress points
- Top mounted, fully enclosed compaction blade with 3.5:1 compaction. Compaction blade cylinders mounted outside the hopper area, keeping them clear of the refuse loading area
- Unloading of waste by tipping, ensuring complete discharge of waste materials and residual liquids collected. Suitable for tipping into skips, rolonof containers and satellite discharge operation



## Key Benefits:

- Fully sealed one piece high tensile steel body construction for high strength with guaranteed no leakages
- Small, compact and very manoeuvrable, an ideal solution where restricted access is a problem and excellent manoeuvrability is required
- Farid comb bin lift fitted as standard - Capable of handling all EN standard bins from 120 litres to 1100 litres capacity and food waste caddies or 'slave type' bins
- Hand loading can be achieved by lowering the standard rear drop down rave plate at a moment's notice
- Top mounted, fully enclosed compaction blade with 3:1 compaction. Compaction blade cylinders mounted outside the hopper area, keeping clear of the refuse loading area
- Unloading of waste by ejection plate, ensuring complete discharge of waste materials and residual liquids collected. Suitable for satellite discharge operation
- Largest body volume in its class (7,500kg GVW). Ideal for bulky waste, dry mixed recyclables, food waste, offensive waste & residual waste



## Key Benefits:

- Fully sealed one piece high tensile steel body construction for high strength with guaranteed no leakages
- Small, compact and very manoeuvrable, an ideal solution where restricted access is a problem and excellent manoeuvrability is required
- Farid comb bin lift fitted as standard - Capable of handling all EN standard bins from 120 litres to 1100 litres capacity and food waste caddies or 'slave type' bins
- Hand loading can be achieved by lowering the standard rear drop down rave plate at a moment's notice
- Top mounted, fully enclosed compaction blade with 5:1 compaction. Compaction blade cylinders mounted outside the hopper area, keeping clear of the refuse loading area
- Unloading of waste by ejection plate, ensuring complete discharge of waste materials and residual liquids collected. Suitable for satellite discharge operation
- Suitable for a chassis GVW of 12,000kgs



# Food & Clinical Waste

## Mini Compactors & Optimised Rear Loaders

### Key Benefits:

- Fully sealed one piece high tensile steel body construction for high strength with guaranteed no leakages
- Small, compact and very manoeuvrable, an ideal solution where restricted access is a problem and excellent manoeuvrability is required
- Hand loading can be achieved by using optional side access doors
- Unloading of waste (Option 1) by tipping, ensuring complete discharge of waste materials and residual liquids collected. Suitable for tipping into skips, rolono containers and satellite discharge operation
- Unloading of waste (Option 2) by conventional ejection plate system, ensuring complete discharge of waste materials and residual liquids collected. Suitable for satellite discharge operation.
- Clinical and offensive waste options

### Mini Compactors are also suitable for:

- Commercial & Industrial Waste
- Domestic Waste
- Recycling of:
  - ◆ Glass
  - ◆ Plastics
  - ◆ Paper
  - ◆ Cardboard



## MICRO<sup>™</sup> L 5

- Body Capacity: 5m<sup>3</sup>
- Compaction Ratio: 3:1 c/w sweeping plate system
- Container Lifting Device From 120ltr to 1100ltr
- Suitable on Chassis with 7.5t GVW
- Unloading Operations by Rear Tipping
- Payload: Approximately 2t - 3.5t  
(Subject to Waste Density & Chassis Option)
- Suitable for Slave Bin operation



## MICRO<sup>™</sup> XHD 7

- Body Capacity: 7m<sup>3</sup>
- Compaction Ratio: 3.5:1 c/w sweeping and carriage plate system
- Container Lifting Device From 120ltr to 1100ltr
- Suitable on Chassis with 11t - 12t GVW
- Unloading Operations by Rear Tipping
- Payload: Approximately up to 6t  
(Subject to Waste Density & Chassis Option)
- Suitable for Slave Bin operation



## MINIMATIC<sup>™</sup> 8

- Body Capacity: 8m<sup>3</sup>
- Compaction Ratio: 3:1 c/w sweeping plate system
- Container Lifting Device From 120ltr to 1100ltr
- Suitable on Chassis with 7.5t - 11t GVW
- Unloading Operations by Conventional Ejector Plate
- Payload: Approximately 2.5t - 3t  
(Subject to Waste Density & Chassis Option)
- Suitable for Slave Bin operation

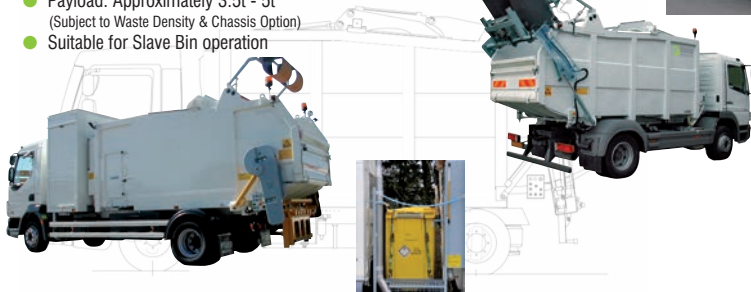


Quality - Reliability - Durability - After Sales Care - Everyday





- Body Capacity: 10m<sup>3</sup>
- Compaction Ratio: 5:1 c/w sweeping plate system
- Container Lifting Device From 120ltr to 1100ltr
- Suitable on Chassis with 11t - 13t GVW
- Unloading Operations by Conventional Ejector Plate
- Payload: Approximately 3.5t - 5t  
(Subject to Waste Density & Chassis Option)
- Suitable for Slave Bin operation



Clinical & Offensive Waste Pods



- Body Capacity: 10m<sup>3</sup>, 13m<sup>3</sup>, 15m<sup>3</sup>
- Compaction Ratio: 5:1 c/w sweeping plate system
- Container Lifting Device From 120ltr to 1100ltr
- Suitable on Chassis with 12t - 18t GVW
- Unloading Operations by Unique Ejector Plate System
- Payload: Approximately 4t - 7.9t  
(Subject to Waste Density & Chassis Option)
- Suitable for Slave Bin operation



## Food & Clinical Waste Mini Compactors - Satellite Operation



- Farid Hillend Engineering Mini Compactors are ideal RCVs for satellite operation.
- Ultimate satellite discharge is performed when using the Farid T1 Plus or Super Titan Semi Trailer refuse collection vehicles - offering a vehicle to vehicle 'mothership' docking transfer of waste solution for bulk volume movements.



# OPTIMISED REAR LOADERS:

spanning 6m<sup>3</sup> to 15m<sup>3</sup> capacity

■ PowerPack PNDR

■ PowerPack PNSF  
(electric)

■ PowerPack PN





# Optimised Rear Loaders

## Key Benefits:

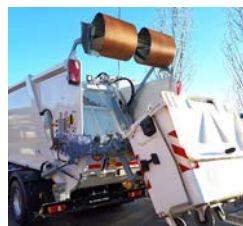
	PowerPack PNDR	PowerPack PNSF	PowerPack PN
● Fully sealed one piece high tensile steel body construction for high strength with guaranteed no leaksages - ideal for food, garden and offensive waste.	✓	✓	✓
● Small, compact and very manoeuvrable, an ideal solution where restricted access is a problem and excellent manoeuvrability is required	✓	✓	✓
● Farid comb bin lift fitted as standard - Capable of handling all EN standard bins from 120 litres to 1100 litres capacity and food waste caddies or 'slave type' bins	✓	✓	✓
● Hand loading can be achieved via drop-down rave	✓	✓	✓
● Enclosed body roof for waste containment and better packing strength distribution with reduced stress points	✓	✓	✓
● Top mounted, fully enclosed compaction blade with compaction. Compaction blade cylinders mounted outside the hopper area, keeping them clear of the refuse loading area	5:1	5:1	5:1
● Unloading of waste by ejection plate, ensuring complete discharge of waste materials and residual liquids collected. Suitable for satellite discharge operation	✓	✓	✓
● Electric e-PTO for: <div> <div>■ lower pollution and lower noise emissions for rural and urban town/city clean air zones</div> <div>■ lower fuel consumption and reduced whole life costs</div> </div>		✓ ✓	
● Body roof mounted electric power pack, with encapsulated protection cover		✓	

## Options

● 130 litre Slave Bin with Travel Bar	✓	✓	✓
● Spray Gun	✓	✓	✓
● Side Door with Safety Proximity Switch	✓	✓	✓
● Duo - pod	✓	✓	✓
● Clinical Storage Catwalk	✓	✓	✓
● Clinical Storage Pod	✓	✓	✓
● Under Body Lift	✓	✓	✓
● Additional Lighting	✓	✓	✓
● Handwash	✓	✓	✓
● Additional Safety Equipment - incl cycle safety systems	✓	✓	✓
● Adjustable Compaction Pressure Switch	✓	✓	✓

### Key Benefits:

- Fully sealed one piece high tensile steel body construction for high strength with guaranteed no leakages
- Small, compact and very manoeuvrable, an ideal solution where restricted access is a problem and excellent manoeuvrability is required
- Farid comb bin lift fitted as standard - Capable of handling all EN standard bins from 120 litres to 1100 litres capacity and food waste caddies or 'slave type' bins
- Hand loading can be achieved by lowering the standard rear drop down rave plate at a moment's notice
- Compaction ratio up to 5:1
- Unloading of waste by ejection plate, ensuring complete discharge of waste materials and residual liquids collected. Suitable for satellite discharge operation
- Suitable for a chassis GVW range of 7,500kgs up to 10,000kgs



## Key Benefits:

- Electric e-PTO for:
  - lower pollution and lower noise emissions for rural and urban town/city clean air zones
  - lower fuel consumption and reduced whole life costs
- Body roof mounted electric power pack, with encapsulated protection cover
- Fully sealed and leak proof, one piece body construction, (guaranteed no leakages)
- Available in 10m<sup>3</sup>, 13m<sup>3</sup> and 15m<sup>3</sup> body capacities
- Suitable for mounting onto any type of chassis cab including electric, hybrid, gas or diesel powered
- Short wheelbase options for excellent manoeuvrability and access
- Suitable for GVW range 12000kgs to 18000kgs
- A versatile and environmentally friendly product



## Key Benefits:

- Fully sealed one piece high tensile steel body construction for high strength with guaranteed no leakages
- Small, compact and very manoeuvrable, an ideal solution where restricted access is a problem and excellent manoeuvrability is required
- Farid comb bin lift fitted as standard - Capable of handling all EN standard bins from 120 litres to 1100 litres capacity and food waste caddies or 'slave type' bins
- Hand loading can be achieved by lowering the standard rear drop down rave plate at a moment's notice
- Compaction ratio up to 5:1
- Unloading of waste by ejection plate, ensuring complete discharge of waste materials and residual liquids collected. Suitable for satellite discharge operation
- Suitable for a chassis GVW range of 12,000kgs up to 18,000kgs



# REAR LOADERS:

spanning 7m<sup>3</sup> to 31m<sup>3</sup> capacity

■ PowerPack T1 Plus

■ PowerLink

■ TwinTrak  
(standard and narrow width)

■ BigBite Junior  
REL

■ BigBite  
Industrial REL



# Rear Loaders

## Key Benefits:

	PoerPack T1 Plus	PowerLink	TwinTrak(s)	TwinTrak(n)	BigBite Jr	BigBite
● Small, compact and very manoeuvrable, an ideal solution where restricted access is a problem and excellent manoeuvrability is required	✓					
● Full range of body sizes from 7m <sup>3</sup> to 27m <sup>3</sup> - Narrow and standard width, compatible with all major chassis cabs	✓			✓		
● Robust reliability	✓	✓	✓	✓	✓	✓
● Hand loading can be achieved	✓	✓	✓	✓	✓	✓
● Ergonomically designed for ease of operation and maintenance	✓	✓	✓	✓	✓	✓
● Full Compaction Ratio	6:1	6:1	6:1	6:1	6:1	6:1
● Ability to lift containers up to 16 Cubic Yards/ 5Tonnes					✓	✓
● Compatible with all major weighing systems	✓	✓	✓	✓	✓	✓
● Unloading of waste by ejection plate, ensuring complete discharge of waste materials and residual liquids collected.	✓	✓	✓	✓	✓	✓

## Options

● Farid comb bin lift - EN standard bins from 120 litres to 1100 litres capacity and food waste caddies or 'slave type' bins	✓	✓	✓	✓	✓	✓
● Compatible with full range of third party Bin Lifters	✓	✓	✓	✓		
● Skip Lift					✓	✓
● Secondary Comb and Trunnion lifts (maximising versatility)					✓	✓
● Solid Rave Door	✓	✓			✓	✓
● Fire Hydrant Connection	✓	✓	✓	✓	✓	✓
● Under Body Weighing Equipment	✓	✓	✓	✓	✓	✓
● Packer Plate Cutout	✓	✓	✓	✓	✓	✓
● Roof Mounted Fall Prevention Safety System	✓	✓	✓	✓	✓	✓
● Liquid Catchment Tray	✓	✓	✓	✓	✓	✓
● Duo - pod	✓	✓	✓	✓		
● Smooth sides option on BigBite (standard on all others)						✓
● Additional Lighting	✓	✓	✓	✓	✓	✓
● Handwash	✓	✓	✓	✓	✓	✓
● Additional Safety Equipment - incl cycle safety systems	✓	✓	✓	✓	✓	✓
● Adjustable Compaction Pressure Switch	✓	✓	✓	✓	✓	✓
● Low Level Hydraulic Tank Top-up	✓	✓	✓	✓	✓	✓
● Eco PTO	✓	✓	✓	✓	✓	✓

### Key Benefits:

- Small, compact and very manoeuvrable, an ideal solution where restricted access is a problem and excellent manoeuvrability is required
- Full range of body sizes from 7m<sup>3</sup> to 14m<sup>3</sup>, compatible with all major chassis cabs
- Optional Farid Evolution comb bin lift - Capable of handling all EN standard bins from 120 litres to 1100 litres capacity and food waste caddies or 'slave type' bins
- Hand loading can be achieved by lowering the standard rear drop down rave plate at a moment's notice
- Full compaction ratio: 6:1
- Carriage plate cylinders mounted outside of the hopper area, keeping clear of the refuse loading area
- Ergonomically designed for ease of operation and maintenance
- Compatible with all major weighing systems





### Key Benefits:

- Full range of body sizes from 14m<sup>3</sup> to 27m<sup>3</sup>, compatible with all major chassis cabs
- Optional Farid Evolution comb bin lift - Capable of handling all EN standard bins from 120 litres to 1100 litres capacity and food waste caddies or 'slave type' bins
- Hand loading can be achieved by lowering the standard rear drop down rave plate at a moment's notice
- Compatible with all 3rd party automatic split bin lifts
- Full compaction ratio: 6:1
- Carriage plate cylinders mounted outside of the hopper area, keeping clear of the refuse loading area
- Ergonomically designed for ease of operation and maintenance
- Compatible with all major weighing systems



**Key Benefits:**

- Designed and constructed for robust reliability
- Proven Swing Link mechanism transmits more packing force into load
- Reduced packing pressures for increase hydraulic longevity
- Greater load density for optimum payload
- Simple design producing reduced maintenance costs
- Full range of body sizes from 16 to 26m<sup>3</sup>
- Compatible With full range of Domestic and Trade Bin Lifts



### Key Benefits:

- Suitable for collecting two waste streams in two separate chambers
- Body sizes from 14m<sup>3</sup> to 26m<sup>3</sup> suit all popular chassis configurations
- Available in Standard Width 70/30, 30/70 and 50/50 chamber options
- Available in Narrow Width 70/30 and 30/70 chamber options
- Hopper volumes designed to provide market leading swept volume capacity
- Proven low friction slide block design
- Rear loading options of open back, semi automatic split bar lift and 2/3 chair fully automatic lifts
- Dual independent tailgates to prevent cross contamination



### Key Benefits:

- Body volume 23m<sup>3</sup> and 25m<sup>3</sup> - Suitable for 26t three axle chassis
- Suitable for fitting to rear steer chassis
- Compact and very manoeuvrable, an ideal solution where restricted access is a problem and excellent manoeuvrability is required
- Handles CHEM standard REL Skips up to 16 cubic yards/5 tonnes
- Evolution Comb Lifter fitted as standard to handle 2 and 4 wheel containers
- Full compaction ratio: 6:1
- Carriage plate cylinders mounted outside of the hopper area, keeping clear of the refuse loading area
- Ergonomically designed for ease of operation and maintenance
- Compatible with all major weighing systems



### Key Benefits:

- Designed and constructed for robust reliability
- Proven Swing Link mechanism transmits more packing force into load
- Ergonomically designed for Ease of Operation and Maintenance
- Greater load density for optimum payload
- Tried, Tested and Trusted design
- Suitable for a wide variety of 32 tonne chassis's
- Optional BigBite Comb (BBC) lifter to handle 2 and 4 wheeled containers
- Compatible with most major Bin and Under Body Weighing Systems



# FRONT LOADERS:

spanning 30m<sup>3</sup> to 36m<sup>3</sup> capacity

■ Euro Half Pack  
Industrial FEL



## Tailgate Options



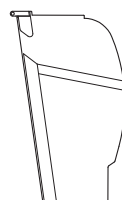
Standard



Kelpie



Bustle



Whalegate

### Key Benefits:

- |   |   |
|---|---|
| ● Speed and flexibility from the market leading Front End Loader    | ✓ |
| ● Ergonomically designed for ease of operation and maintenance      | ✓ |
| ● Designed to handle containers up to 10m <sup>3</sup> / 3.63 tonne | ✓ |
| ● Tried, tested and trusted design                                  | ✓ |
| ● Suitable for a wide variety of 26 & 32 tonne chassis              | ✓ |
| ● Fully automatic self levelling forks option available             | ✓ |
| ● Compatible with all major Bin Weighing Systems                    | ✓ |
| ● Tailgates available in 4 sizes to suit customer requirements      | ✓ |
| ● Various arm and fork requirements to suit customer requirements   | ✓ |
| ● Various top door configurations to suit customer requirements     | ✓ |

### Options

- |   |   |
|---|---|
| ● Roof Access Ladder                                      | ✓ |
| ● 1100 litre bin arm                                      | ✓ |
| ● Fork Weigh System                                       | ✓ |
| ● Comb Lift   | ✓ |
| ● Sliding Top Door  | ✓ |
| ● Tailgate : Standard Small (3.6m <sup>3</sup> )          | ✓ |
| ● Tailgate : Kelpiegate (5.02m <sup>3</sup> )             | ✓ |
| ● Tailgate : Whalegate (9.45m <sup>3</sup> )              | ✓ |
| ● Additional Lighting                                     | ✓ |
| ● Handwash  | ✓ |
| ● Additional Safety Equipment - incl cycle safety systems | ✓ |
| ● Low Level Hydraulic Tank Top-up                         | ✓ |
| ● Eco PTO   | ✓ |



# SIDE LOADERS:

spanning 15m<sup>3</sup> to 30m<sup>3</sup> capacity

■ FMO Plus

Automatic Side Loader





## Automatic Side Loader

FMO Side Loader

### Key Benefits:

- |  |   |
|--|---|
| ● European market leader                                       | ✓ |
| ● Single person operation                                      | ✓ |
| ● Speed and Flexibility  | ✓ |
| ● Ergonomically designed for ease of operation and maintenance | ✓ |
| ● Ability to lift containers 770 to 4200 L                     | ✓ |
| ● Lifting cycle time (2400 L container + 42 seconds)           | ✓ |
| ● Maximum lifting capacity 1200kg                              | ✓ |
| ● Fully automatic self levelling and dumping of containers     | ✓ |
| ● Automatic pick-up and return bin location sensor             | ✓ |

### Options

- |   |   |
|---|---|
| ● 1100 litre bin arm                                      | ✓ |
| ● Trunnion Lift   | ✓ |
| ● Additional Lighting                                     | ✓ |
| ● Handwash  | ✓ |
| ● Additional Safety Equipment - incl cycle safety systems | ✓ |
| ● Adjustable Compaction Pressure Switch                   | ✓ |
| ● Low Level Hydraulic Tank Top-up                         | ✓ |
| ● Eco PTO   | ✓ |

# DULE SYSTEMS - EQUIPMENTS

spanning 26m<sup>3</sup> to 28m<sup>3</sup> capacity

■ Dule System



### Key Benefits:

- |   |   |
|---|---|
| ● Single operator   | ✓ |
| ● Fully automatic bilateral robotic crane system for waste containers | ✓ |
| ● Designed to work with surface and underground containers            | ✓ |
| ● Speed in waste collection - fast operation                          | ✓ |
| ● Possibility of placing the containers in almost any location        | ✓ |
| ● Reduces the maintenance of the containers                           | ✓ |
| ● Suitable for all rural and urban environments                       | ✓ |
| ● Cleaning unit incorporated into the system                          | ✓ |

### Options

- |   |   |
|---|---|
| ● Weighing options  | ✓ |
| ● Additional Lighting                                     | ✓ |
| ● Handwash  | ✓ |
| ● Additional Safety Equipment - incl cycle safety systems | ✓ |
| ● Adjustable Compaction Pressure Switch                   | ✓ |
| ● Low Level Hydraulic Tank Top-up                         | ✓ |
| ● Eco PTO   | ✓ |

# CONTAINER WASHERS:

■ Side & Rear



## Side & Rear Loading

### Key Benefits:

- Range of washing capacity sizes to suit GVW from 7.5 to 18 tonne ✓
- Hot and/or Cold wash ✓
- Small, compact and very manoeuvrable, an ideal solution where restricted access is a problem and excellent manoeuvrability is required ✓
- Stainless steel Farid Hillend Engineering comb bin lift fitted as standard - Capable of handling all EN standard bins from 120 litres to 1100 litres capacity ✓
- Totally enclosed stainless steel washing chamber ✓
- Water storage divided into two chambers (clean & dirty) ✓
- Residual waste (slurry) containment sump ✓
- Ability to wash containers (bins) internally and/or externally ✓
- Variable wash cycle time ✓

Container  
Washer

### Options

- High Pressure Spray Lance with 15m Hose ✓
- Detergent System ✓
- Automatic Disinfectant System ✓
- Automatic Bin Gatherer ✓
- Street Washing Arm ✓
- Additional Lighting ✓
- Handwash ✓
- Additional Safety Equipment - incl cycle safety systems ✓

# SPECIALIST:

■ Super Titan Semi-Trailer







# SUPER TITAN™

## SEMI TRAILER 40

Super Titan  
Semi Trailer

### Key Benefits:

- Enables the transportation of large volumes of waste ✓
- 40m<sup>3</sup> internal volumetric body capacity ✓
- Large 3.0m<sup>3</sup> internal hopper capacity ✓
- Heavy duty construction for maximum durability and reliability ✓
- Open back or skip lift available ✓
- Ability to lift containers up to 16 Cubic Yards/5Tonnes capacity ✓
- Full compaction ratio: 6:1 ✓
- Suitable for satellite vehicle waste transfer (bulking-up) ✓
- 3 axle semi-trailer, 44t GVW (with 3 axle tractor unit) ✓

### Options

- Farid Hillend Engineering Comb Lift ✓
- Farid Hillend Engineering Skip Lift ✓
- Smooth Sides ✓
- Solid Rave Door ✓
- Under Body Weighing Equipment ✓
- Remote Control Wander Lead for Discharge Operation ✓
- Liquid Catchment Tray ✓
- Additional Lighting ✓
- Handwash ✓
- Additional Safety Equipment - incl cycle safety systems ✓
- Adjustable Compaction Pressure Switch ✓
- Low Level Hydraulic Tank Top-up ✓

# SPECIALIST:



## Key Benefits:

- Enabling two or three separate waste streams to be collected with one vehicle
- Near side (left hand side) loading & off side (right hand side) tipping non-compaction Pod
- Available to suit chassis from 7.5t GVW – 32t GVW
- Available for narrow or standard width vehicles
- Available with comb lift, trough pannier lift or comb & trough pannier lift
- Wide range of Pod sizes from 2.7m<sup>3</sup> to 5.3m<sup>3</sup> (standard variant)
- Wide range of Pod sizes from 4m<sup>3</sup> to 10m<sup>3</sup> (specialist variant)
- Ergonomically designed for ease of operation and maintenance



A range of Specialist Cabinets are available  
- details upon request

# SPECIALIST:



1. UTL (Universal Trade Lift) PowerLink family



## Key Benefits:

- Established and proven over many years
- Bar lifters for commercial usage
- Container weighing options available

2. BBC (BigBite Comb) Lift  
BigBite Industrial family



3. UHP (Universal High Performance) Lift  
TwinTrak family



5. Evolution Comb Lift  
PowerPack T1 Plus family



6. Range of comb lifters for  
the Mini Compactor family

4. Manual Comb Lift  
BigBite Junior family





### Farid Hillend Engineering Limited

Taxi Way, Hillend Industrial Estate, Dunfermline, Fife KY11 9ES

**Tel: +44 (0) 1383 823625    Fax: +44 (0) 1383 824062**

[salesinfo@hillendeng.com](mailto:salesinfo@hillendeng.com)    [www.hillendeng.com](http://www.hillendeng.com)